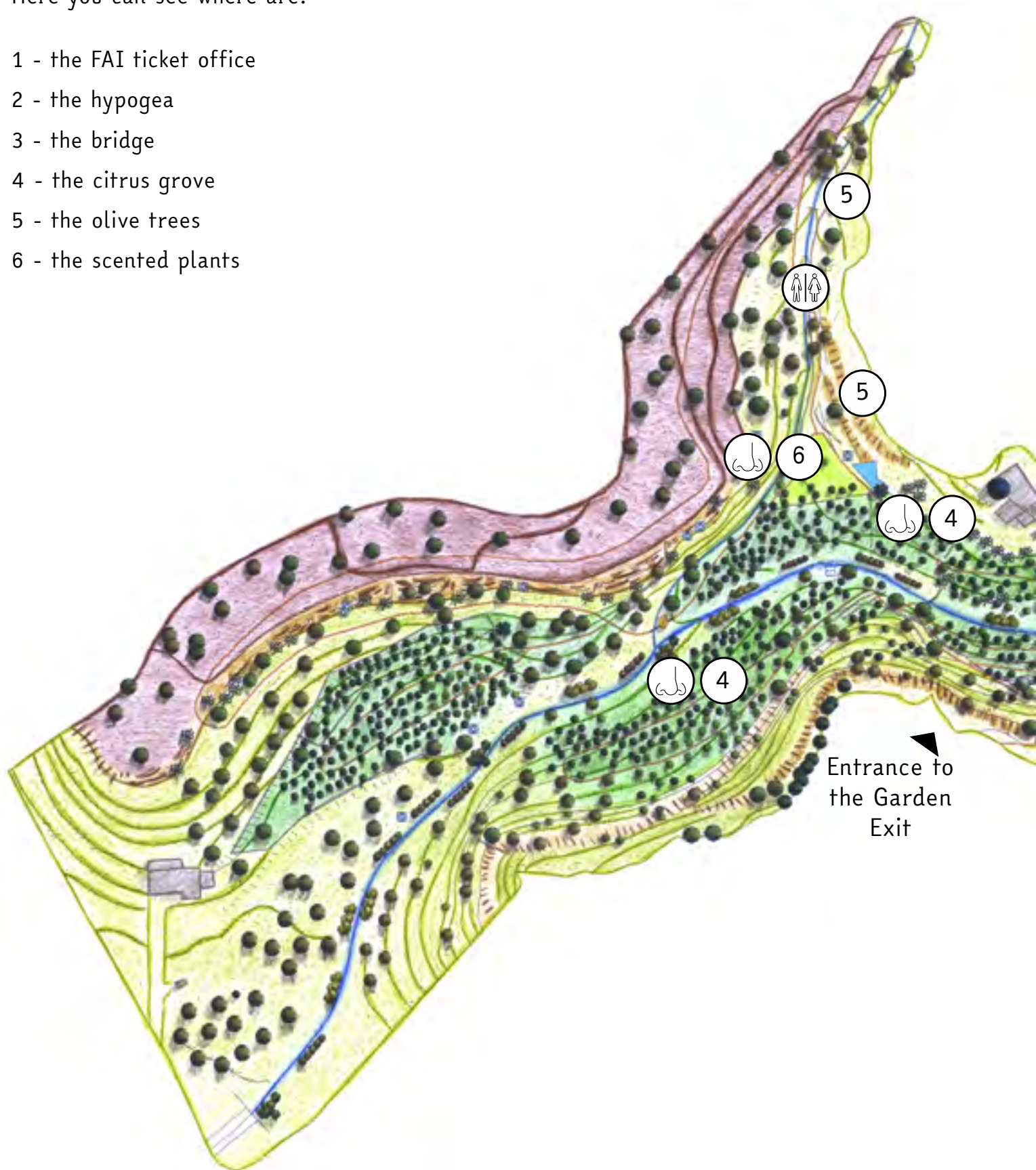


**Sensory map
of Kolymbethra Garden
in Agrigento**

Sensory map







Here you can see where are:

- 1 - the FAI ticket office
- 2 - the hypogea
- 3 - the bridge
- 4 - the citrus grove
- 5 - the olive trees
- 6 - the scented plants





Legend:

-  Here it is dark
-  Here you can hear the sound of water
-  Here it might be crowded
-  Here you can smell the scent of flowers
-  Here you find the toilets
-  Here you find the pic-nic area